

GEORGIAN BAY LIVING

# Escarpment

energetic | exhilarating | inspiring | artistic | informative | fun | spring 2011

annual

*Make-over*  
issue

ESCARPMENTMAGAZINE.CA  
WE'RE PRICELESS! PLEASE TAKE A COPY HOME

The "Before" photo: Seemingly flat, the engineer's grading plan revealed plenty of opportunity to utilize level changes to create interesting space. Note that the second floor balcony lacks any way to get down to ground level.

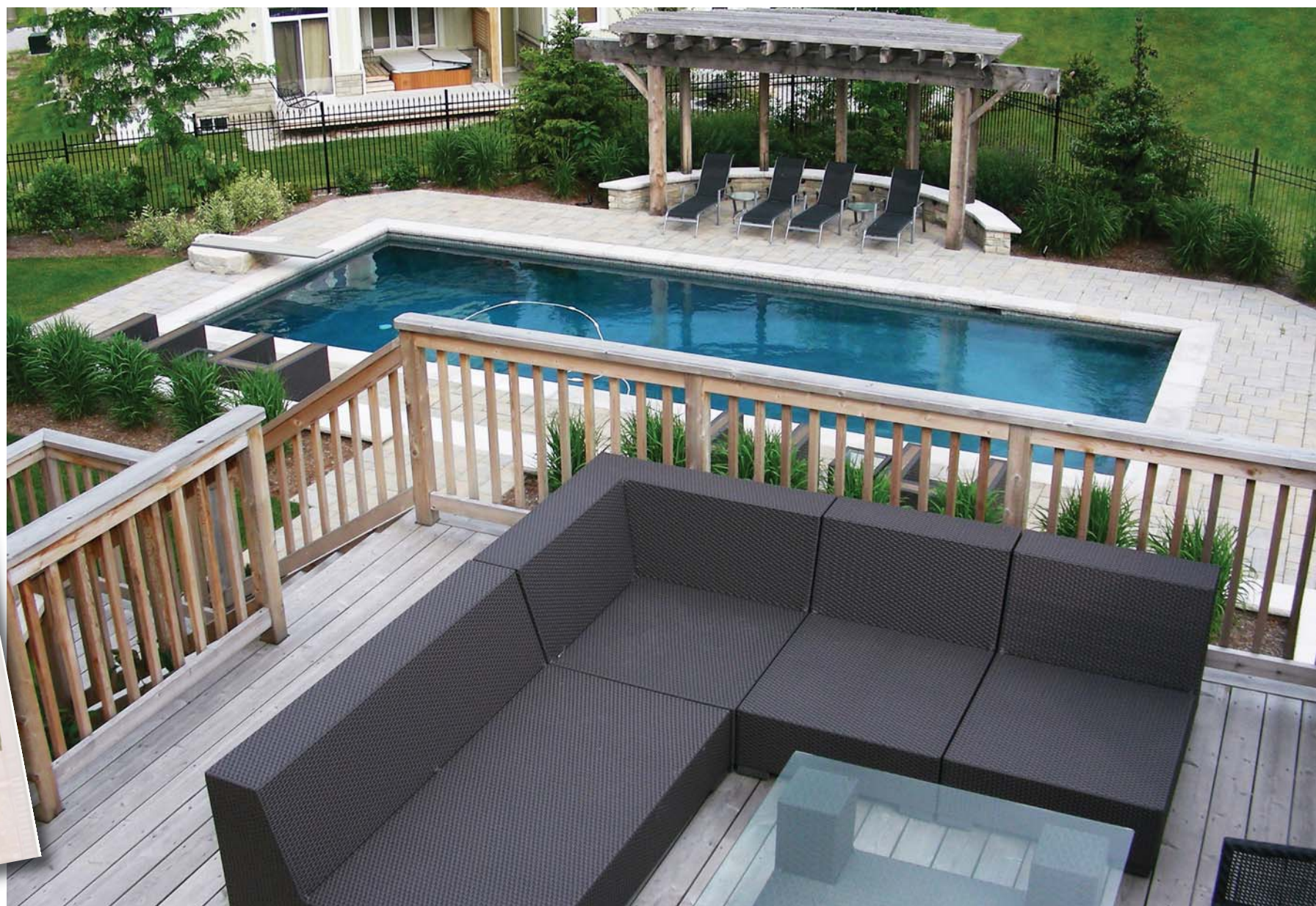


Landscape

# MAKE-OVER

THE LANDSCAPING FOR THIS DETACHED HOME LOCATED AT THE ORCHARD DEVELOPMENT AT CRAIGLEITH IS A PRIME EXAMPLE OF HOW A COMPREHENSIVE APPROACH TO LANDSCAPING CAN ACHIEVE A STUNNING TRANSFORMATION.

PHOTOS | PETER OWEN



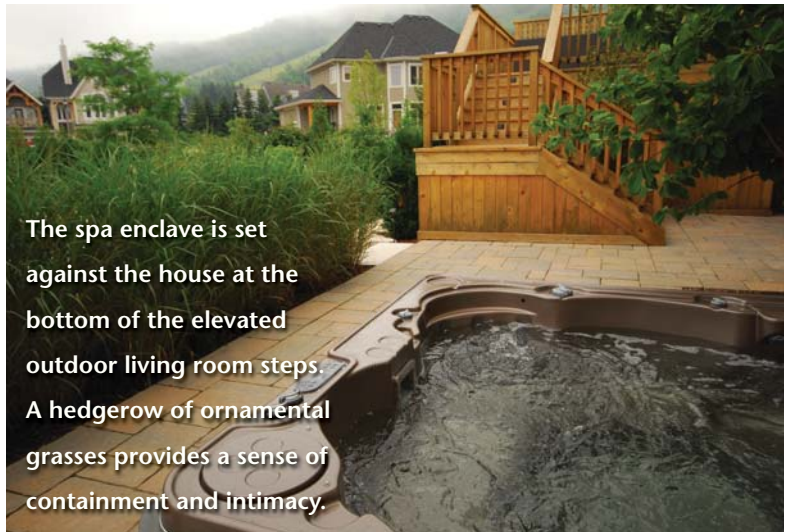
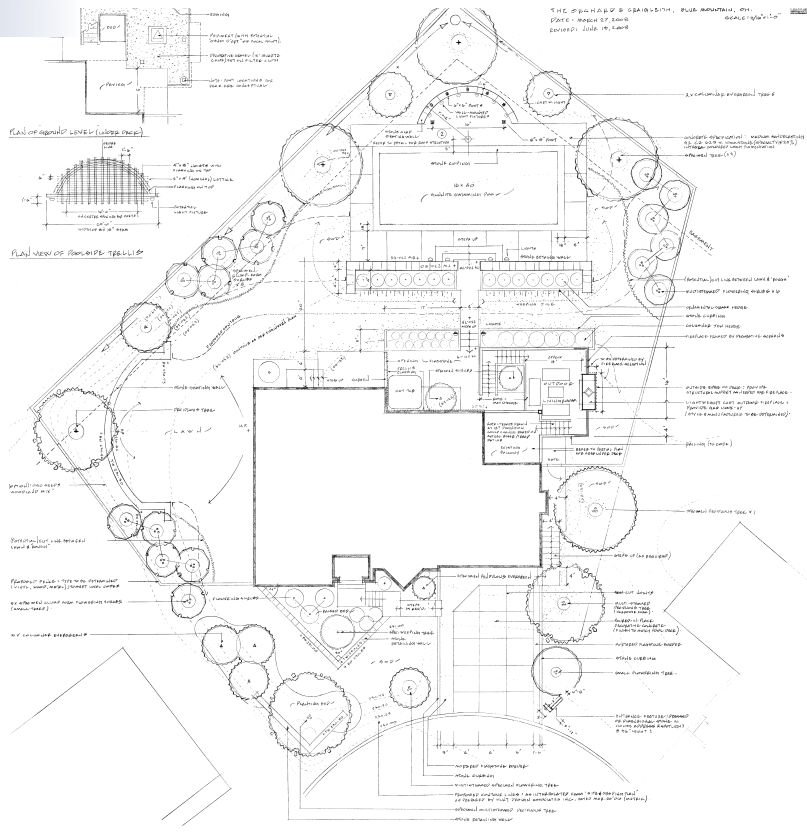
Local landscape architect Peter Owen brought the full force of his skills, acquired over more than a quarter century, to use when conceiving of this space for his clients, an amalgamation of architectural built form and lush plantings carefully integrated into the site through the interpretation of the topographic survey provided.



The result is a virtual oasis — a self-contained space set within a subdivision context. ➤

**GARDEN | Landscape Make-over**

**The property is divided into a sequence of spaces, a seamless transition from one realm to another. The primary architectural element is an elevated deck which was conceived to connect the house's 2<sup>nd</sup> floor porch to the backyard. Orientating it to take advantage of the ski hill views creates a dynamic, highly useable outdoor living space. From here, perched up 2 flights of stairs you gaze down to the swimming pool and gardens, the staircase leading down to the spa enclave.**



The spa enclave is set against the house at the bottom of the elevated outdoor living room steps. A hedgerow of ornamental grasses provides a sense of containment and intimacy.



Level changes allow for walls and steps to be integrated into the design - a critical factor in creating interesting space!



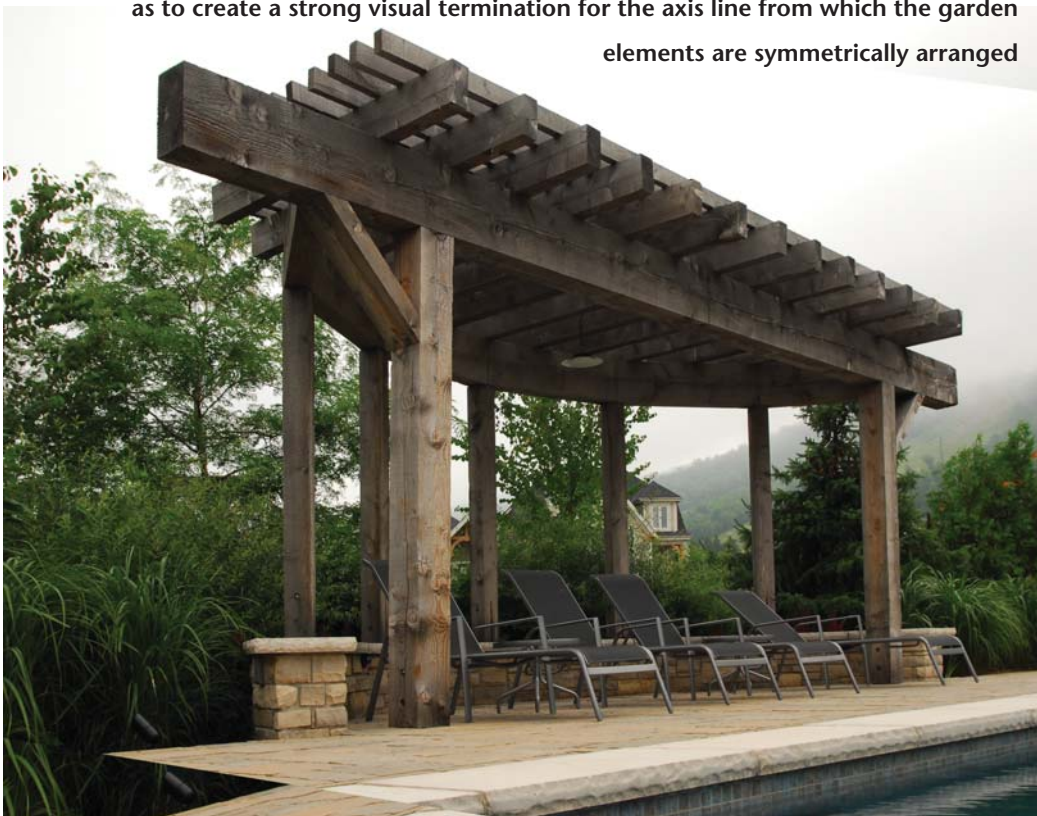
**GARDEN | Landscape Make-over**



Although a freeform pool design was explored in the conceptual design phase, the simple rectangular shape set parallel to the house was deemed to be the most appropriate solution.

Set perpendicular to the back of the house the walkway leads from the spa terrace down a series of steps with the terraces and swimming pool arranged symmetrically along this axis, with the eye terminated on a rustic trellis structure.

Besides providing shade, this rustic gazebo structure was scaled in such a way as to create a strong visual termination for the axis line from which the garden elements are symmetrically arranged



The Landmark Group did a terrific job of executing the work, based on the detailed plan.

*Peter Owen has lived in the Town of the Blue Mountains since last summer, but has been coming up to the area his entire life. His various, locally completed projects are all exemplary examples of outdoor spaces that benefit from a truly professional landscape architectural approach. |E|*

