

For this custom timber frame home, nestled against the escarpment, OLA went with a naturalistic approach to best compliment the architectural style of the house. The crushed granite driveway is bordered with random monolithic limestone slabs. Rustic stone retaining walls and native-inspired plantings complete the vision.

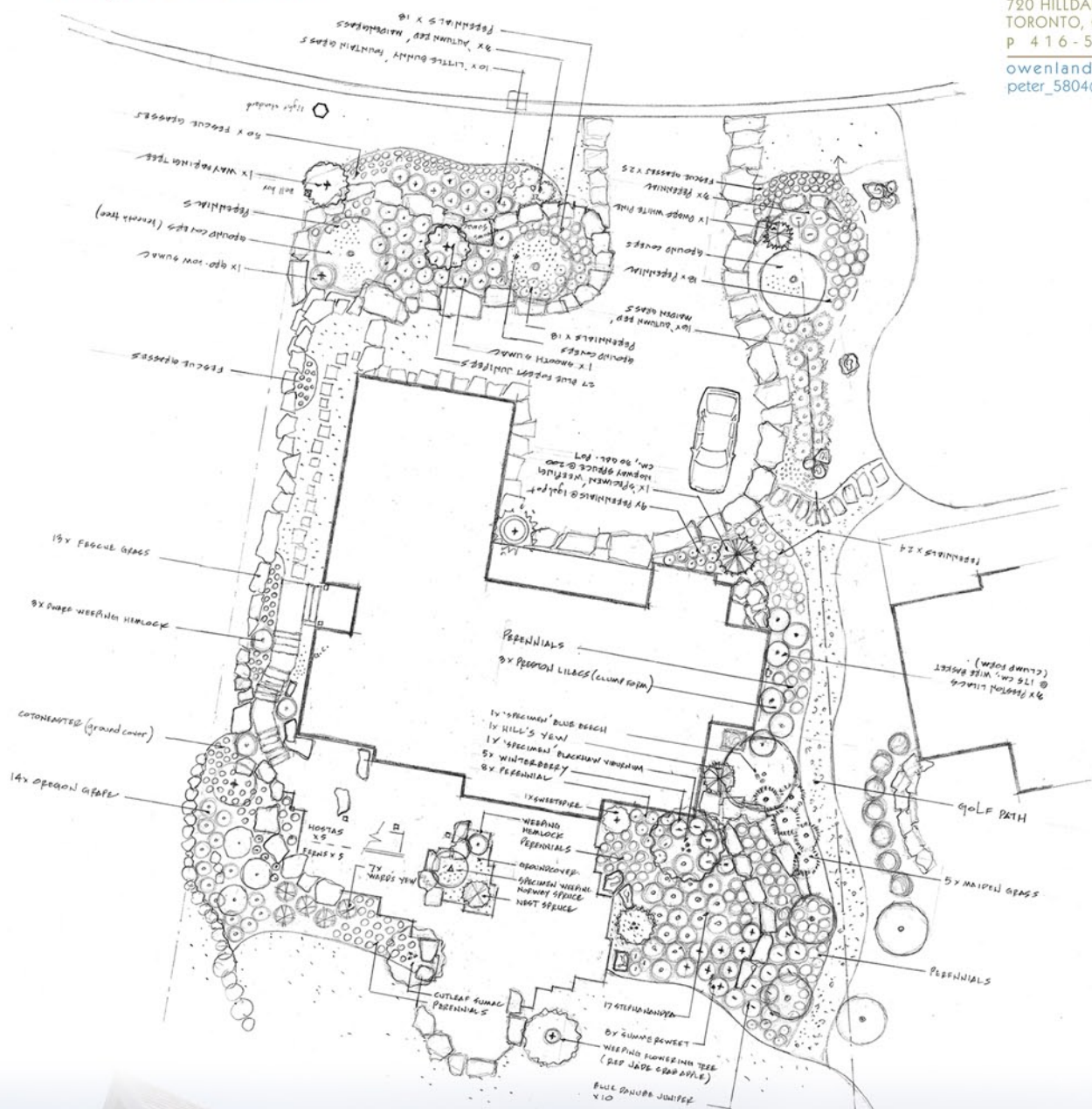


**OWEN**  
LANDSCAPE  
ARCHITECT

PETER OWEN, B.L.A., O.A.L.A.

720 HILDALE AVE. EAST  
TORONTO, ON M4S 1V3  
P 416-526-3185

[owenlandscape.com](http://owenlandscape.com)  
[peter\\_5804@hotmail.com](mailto:peter_5804@hotmail.com)



*Peter Owen maintains a residence in the  
Town of Blue Mountains, and can be reached  
at 416-526-3185. Check out his website at:  
[www.owenlandscape.com](http://www.owenlandscape.com)*